

GROUND LUG:

WIRE RANGE - TWO 600MCM-2
TIGHTENING TORQUE 500 IN-LB.

L1 L2 L3 T1 T2 T3

CUSTOMER CONNECTIONS:

WIRE RANGE - TWO 600MCM-2
TIGHTENING TORQUE 500 IN-LB.

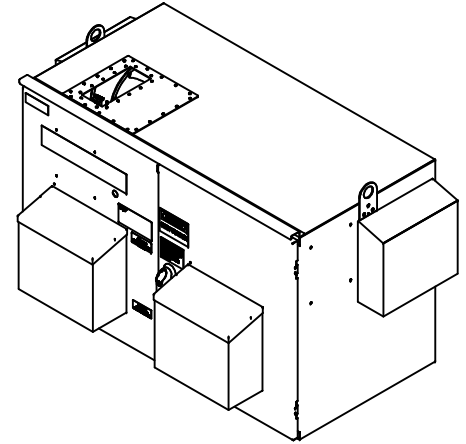
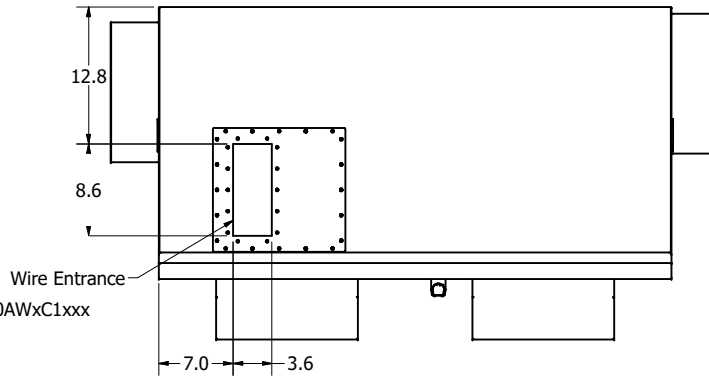
Notes:

1. Customer is responsible for installation to meet all national and local electrical codes.
2. Use only hubs or fittings that comply with UL514B for type 3R enclosures.
3. Approx. WT LBS : 800
4. Enclosure Color: RAL 7006 Beige Grey
5. PQconnect Programming Model: Custom Unit HGL0450AWxC1xxx
6. JCI Part#: 371-09214-205

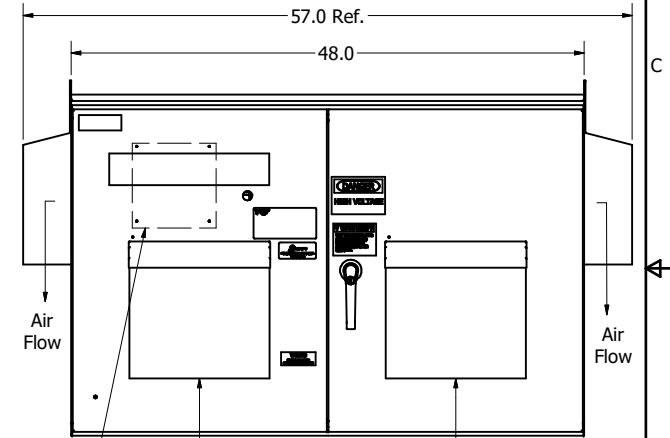
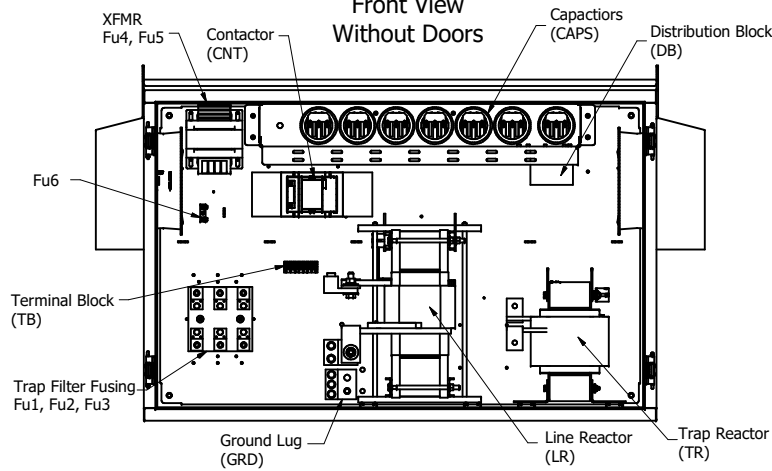
UNIT SPECIFICATIONS						
KVAR	HARMONIC	VOLT	Hz	PHASE	HP	AMPS
70	5TH	480	60	3	450	515

SCHEMATIC : 30586-PQ6

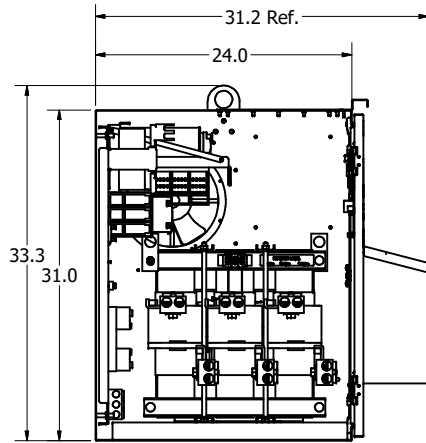
Top View



Front View Without Doors



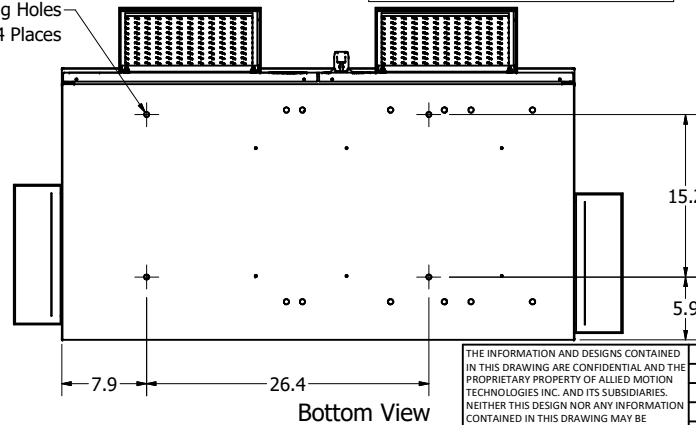
Front View



Side View Without Wall

Thermal Switches Installed In Line Reactor And Tuning Reactor Wired To PQconnect For Monitoring

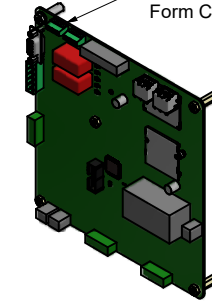
Ø0.47 Mounting Holes 4 Places



Bottom View

PQconnect Contactor Control Board Mounted To Inside Of Door

Customer Connection Form C Fault Relay J10



THE INFORMATION AND DESIGNS CONTAINED IN THIS DRAWING ARE CONFIDENTIAL AND THE PROPRIETARY PROPERTY OF ALLIED MOTION TECHNOLOGIES INC. AND ITS SUBSIDIARIES. NEITHER THIS DESIGN NOR ANY INFORMATION CONTAINED IN THIS DRAWING MAY BE REPRODUCED OR DISCLOSED TO OTHERS WITHOUT THE EXPRESS WRITTEN CONSENT OF ALLIED MOTION TECHNOLOGIES INC. AND ITS SUBSIDIARIES.

NO	REVISION	DATE	BY	SCALE
B	5984 Updated Enclosure, Tray	07/06/22	JRN	
A	As Designed	09/04/19	JRN	
NO				

TOLERANCES (EXCEPT AS NOTED)	
DECIMAL	.XX ± .25 .XXX ± .10
FRACTIONAL	± 1/16
ANGULAR	± 1°


TCI W132N10611 (Rev 13) 5/6
 Germantown, WI 53022
 © 2022 TCI, LLC
 An Official Motion Company
 HarmonicGuard Low Capacitance
 450HP, 480/3/60, Type 3R, PQconnect, JCI
 DES BY: JRN DATE: 09/04/19 FILE: 108195DG
 SCALE: 1/9 DRAWN: JCI SHEET 1 OF 1